

W-Series

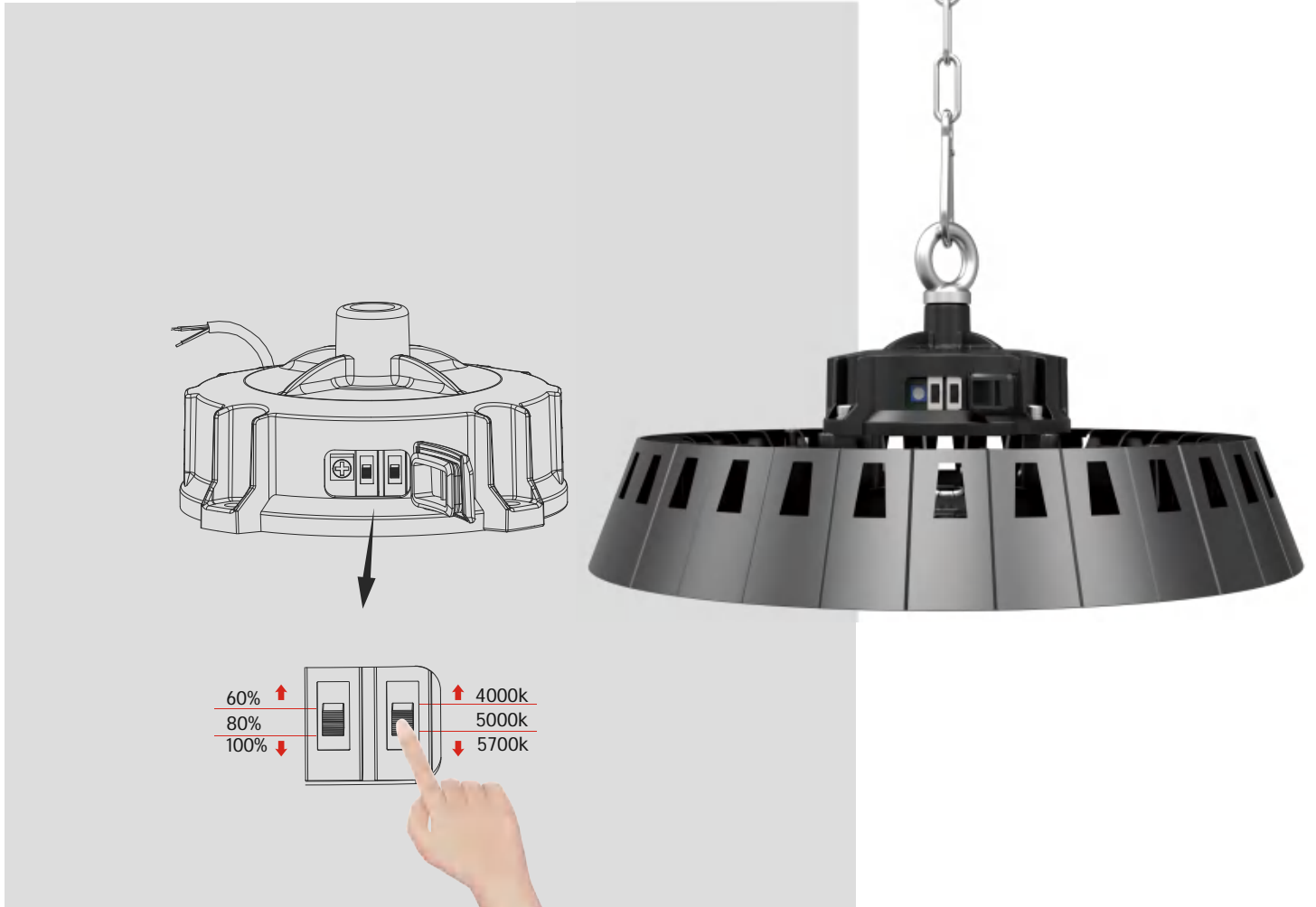
With this Product, You Get Excellent Value for Your Money

It uses its ultra-thin light-emitting surface to disperse heat rapidly, ensuring a longer product lifespan.



Power & CCT Driver

We can push the button on the power supply to achieve the desired effect, as shown in the the following figure.



4000k



5000k



5700k



60%



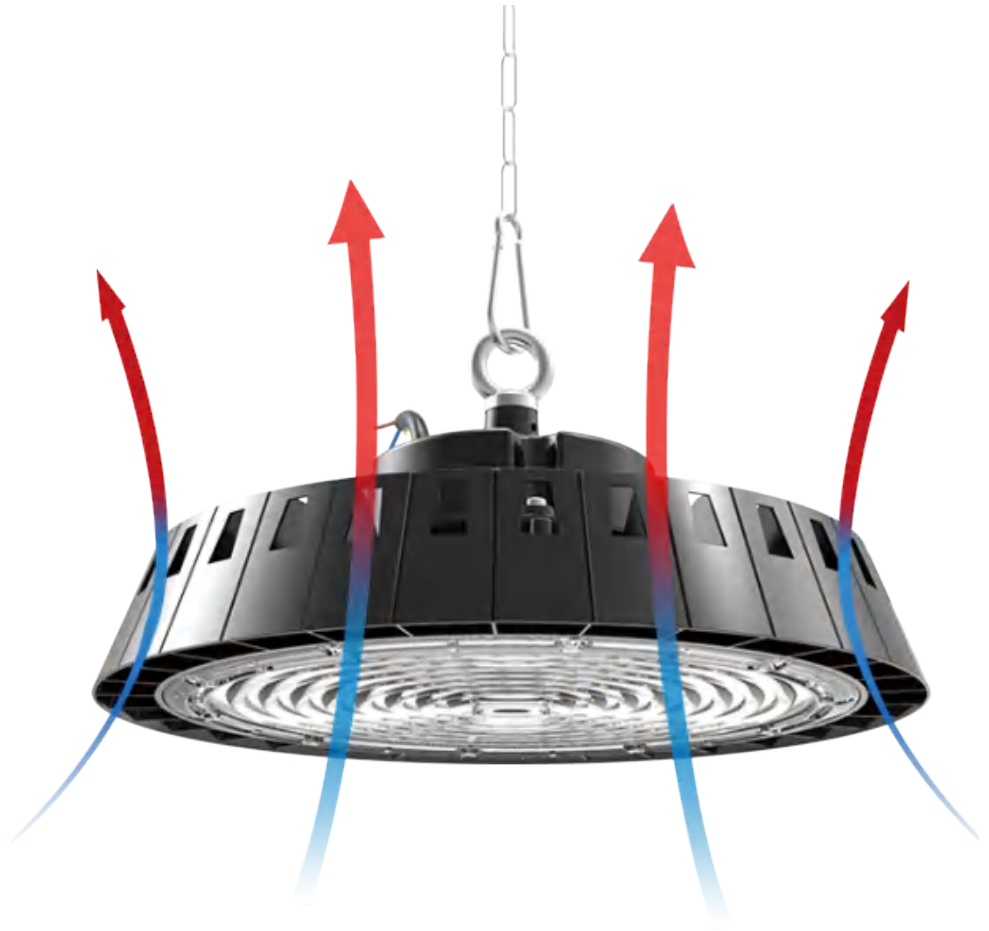
80%



100%

Excellent Heat Dissipation

Our product does a fantastic job at handling heat, which means it works really well, lasts a long time.



Anti-Glare Reflector

Use this reflector to reduce glare from your 100-, 150-, 200-Watt UFO LED High-Bay Light and to create a traditional high-bay look. The reflector installs around the fixture's lens and comes with 4 screws to secure it in place.



SPECIFICATIONS TABLE

GENERAL INFORMATION	
Driver included	Yes
CE mark	Yes
RoHS compliant	Yes
Safety features	Open circuit protection Short circuit protection Overvoltage protection
Testing standard	LM-79-19 (all measurements in ISO17025 accredited laboratory)
HOUSING AND FINISH	
Housing	Aluminium
Optic	Polycarbonate
Protector	Polycarbonate (with integrated lenses)
Housing finish	Electrostatic polyester powder coating
Standard colour(s)	RAL 9017 black
OPERATING CONDITIONS	
Operating Temperature Range (Ta)	-30°C to + 45°C
Operating Humidity	10-90%RH
Mounting Option	Loop Hanging Bracket Mounting
Warranty	5 years
PERFORMANCE	
Power	100W/150W/200W/240W
Efficacy	210lm/W,190lm/W,170lm/W/150lm/W
Efficacy(3CCT Model)	185lm/W,170lm/W
Power Efficiency	≥93%
Start Time	≤0.2S
Warm-up time to 60%	0.5S

ELECTRICAL INFORMATION	
Electrical Class	Class I EU
Nominal Voltage	120-277V 50/60Hz
Power factor (at fullload)	0.9
Surge Protection Options (KV)	6KV-Line-Line 6KV-Line-Earth
Electromagnetic Compatibility (EMC)	EN 55015:2019/A11:2020, EN 61000-3-2:2019, EN 61000-3-3:2013, EN 61547:2009, EN 62493:2015
Total Harmonic Distortion(THD)	IEC 61000-3-2 Class C <20%
Driver Type	Constant current(CC)
Withstand Voltage	1.5KV 60S 10mA
OPTICAL INFORMATION	
LED Type	SMD2835
Beam Angle	60° / 90° / 120°
Recommended installation height	4m to 12m
Color Tolerance	Ra70 ≤7 Ra80 ≤5
LED colour Temperature	3000K / 4000K / 5000K / 5700K / 6500K
Colour Rendering Index (CRI)	CRI>70 standard CRI>80 optional
Upward Light Output Ratio (ULOR)	0%
LIFETIME OF THE LEDS @ TA 25°C	
All configurations	
L70B50	> 100,000h
L80B20	>50,000h
L90B10	>30,000h
Switching Cycles	>100,000 times

※Lamp switch must control L line or control L and N lines.
 ※Ra measurement tolerance is ±2.

PACKAGING

POWER	PACKAGE SIZE	QTY/CTN	SINGLE PIECE VOLUME	NET WEIGHT	GROSS WEIGHT	20GP	40HQ
100W	L275*W275*H170mm	1PCS/CTN	0.0116m ³	1.5kg	2.0kg	2022pcs	5133pcs
150W	L315*W315*H170mm	1PCS/CTN	0.0149m ³	2.0kg	2.5kg	1541pcs	3912pcs
200W	L355*W355*H170mm	1PCS/CTN	0.0202m ³	2.4kg	3.2kg	1214pcs	3081pcs
240W	L395*W395*H170mm	1PCS/CTN	0.0259m ³	2.6kg	3.3kg	980pcs	2565pcs

PERFORMANCE

PREMIUM VERSION

POWER	LUMENS	EFFICACY
100W	21,000LM	210LM/W(Ra70)
	19,500LM	195LM/W(Ra80)
150W	31,500LM	210LM/W(Ra70)
	30,000LM	200LM/W(Ra80)
200W	42,000LM	210LM/W(Ra70)
	40,000LM	200LM/W(Ra80)
240W	50,400LM	210LM/W(Ra70)
	48,000LM	200LM/W(Ra80)

PRO VERSION

POWER	LUMENS	EFFICACY
100W	19,000LM	190LM/W(Ra70)
	18,000LM	180LM/W(Ra80)
150W	28,500LM	190LM/W(Ra70)
	27,000LM	180LM/W(Ra80)
200W	38,000LM	190LM/W(Ra70)
	36,000LM	180LM/W(Ra80)
240W	45,600LM	190LM/W(Ra70)
	43,200LM	180LM/W(Ra80)

STANDARD VERSION

POWER	LUMENS	EFFICACY
100W	17,000LM	170LM/W(Ra70)
	15,700LM	157LM/W(Ra80)
150W	25,500LM	170LM/W(Ra70)
	24,000LM	160LM/W(Ra80)
200W	34,000LM	170LM/W(Ra70)
	32,000LM	160LM/W(Ra80)
240W	40,800LM	170LM/W(Ra70)
	38,400LM	160LM/W(Ra80)

ECO VERSION

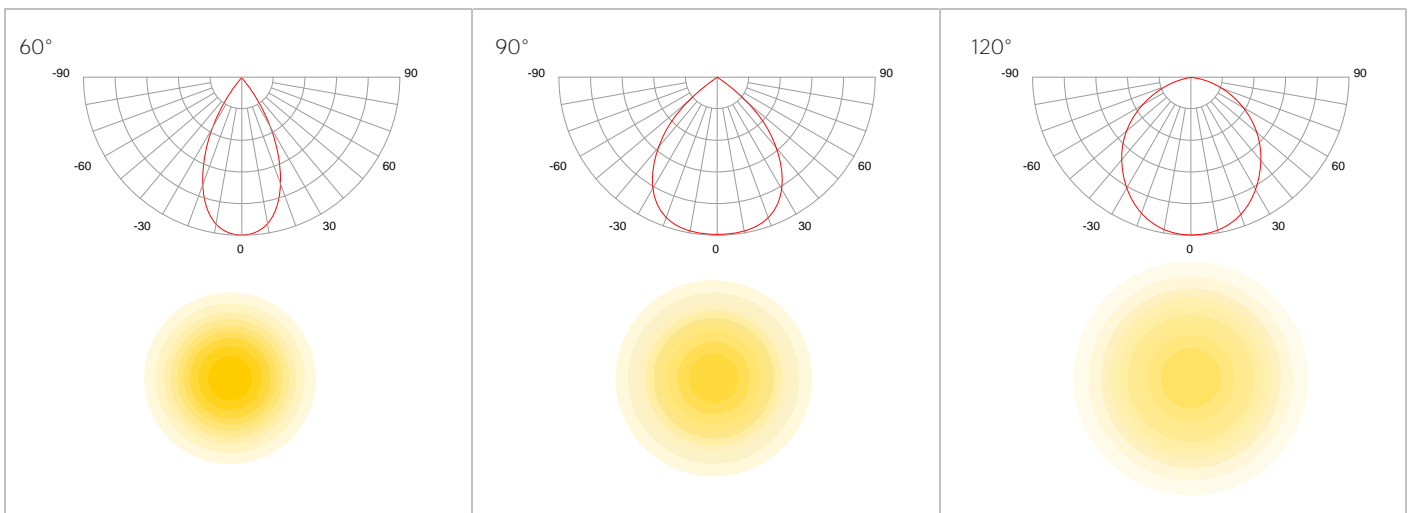
POWER	LUMENS	EFFICACY
100W	15,000LM	150LM/W(Ra70)
	14,000LM	140LM/W(Ra80)
150W	22,500LM	150LM/W(Ra70)
	21,000LM	140LM/W(Ra80)
200W	30,000LM	150LM/W(Ra70)
	28,000LM	140LM/W(Ra80)
240W	36,000LM	150LM/W(Ra70)
	33,600LM	140LM/W(Ra80)

※The Performance Data is tested base on 230VAC, 90° and 4000K for all versions
 ※Power Consumption Tolerance ±5% (Apply to all versions)
 ※Lumen Efficiency Tolerance ±5% (Apply to all versions)

APPLICATION



LIGHT DISTRIBUTIONS



PENDANT MOUNTING

Power	Size
100W	Φ 230*H170mm
150W	Φ 270*H170mm
200W	Φ 310*H170mm
240W	Φ 350*H170mm

