



O-Series

Premium Design to Achieve upto 120-Degree Beam Angle

Covering all corners of the facility and has an IP65 rating which indicates a completely dust-free , water-resistant model.



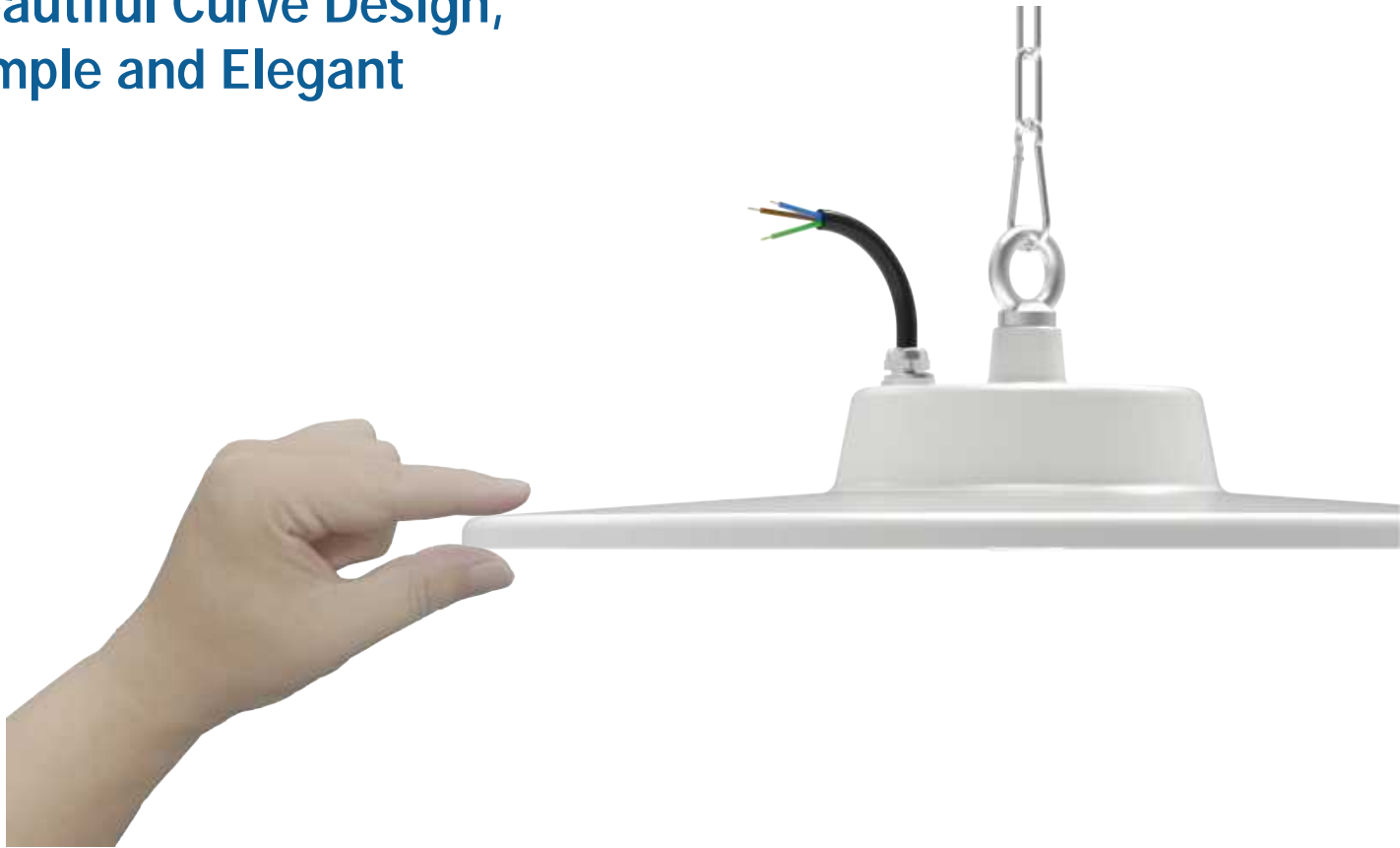
Easy to clean and maintain

The design of materials and structures lays the foundation for the product's easy-to-clean characteristics. The housing design without any screws provides security, while the smooth surface design avoids the accumulation of dust and debris.

Smooth Design



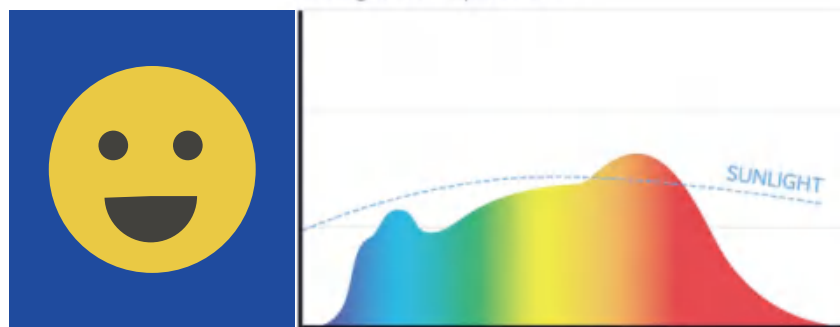
Beautiful Curve Design, Simple and Elegant



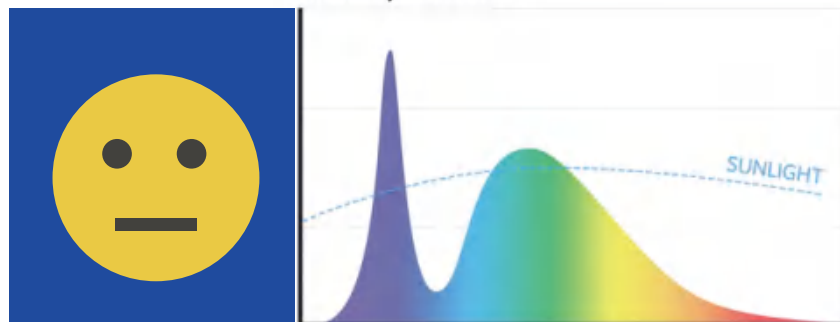
Full Spectrum Lamp Beads

Full spectrum lights can help supplement natural daylight, helping you feel better, see better.

BioLight Full Spectrum



Ordinary White LED



SPECIFICATIONS TABLE

GENERAL INFORMATION	
Driver included	Yes
CE mark	Yes
RoHS compliant	Yes
Safety features	Open circuit protection Short circuit protection Overvoltage protection
Testing standard	LM-79-19 (all measurements in ISO17025 accredited laboratory)
HOUSING AND FINISH	
Housing	Aluminium
Optic	Polycarbonate
Protector	Polycarbonate (with integrated lenses)
Housing finish	Electrostatic polyester powder coating
Standard colour(s)	RAL 1127 white
OPERATING CONDITIONS	
Operating Temperature Range (Ta)	-30°C to + 45°C
Operating Humidity	10-90%RH
Mounting Option	Loop Hanging
Warranty	3 years
PERFORMANCE	
Power	100W/150W/200W
Efficacy	160lm/W, 140lm/W
Power Efficiency	≥93%
Start Time	≤0.2S
Warm-up time to 60%	0.5S

ELECTRICAL INFORMATION	
Electrical Class	Class I EU
Nominal Voltage	220-240V 50/60Hz
Power factor (at fullload)	0.9
Surge Protection Options (KV)	4KV-Line-Line 4KV-Line-Earth
Electromagnetic Compatibility (EMC)	EN 55015:2019/A11:2020, EN 61000 3-2:2019, EN 61000-3-3:2013, EN 61547:2009, EN 62493:2015
Total Harmonic Distortion(THD)	IEC 61000-3-2 Class C <20%
Driver Type	Constant current(CC)
Withstand Voltage	1.5KV 60S 10mA
OPTICAL INFORMATION	
LED Type	SMD2835
Beam Angle	60° / 90° / 120°
Recommended installation height	4m to 12m
Color Tolerance	Ra70 ≤7 Ra80 ≤5
LED colour Temperature	3000K / 4000K / 5000K / 5700K / 6500K
Colour Rendering Index (CRI)	CRI>70 standard CRI>80 optional
Upward Light Output Ratio (ULOR)	0%
LIFETIME OF THE LEDS @ TA 25°C	
All configurations	
L70B50	> 100,000h
L80B20	> 50,000h
Switching Cycles	> 100,000 times

※Lamp switch must control L line or control L and N lines.
 ※Ra measurement tolerance is ±2.

PACKAGING

POWER	PACKAGE SIZE	QTY/CTN	SINGLE PIECE VOLUME	NET WEIGHT	GROSS WEIGHT	20GP	40HQ
100W	L365*W365*H130mm	1PCS/CTN	0.0173m3	1.8kg	2.0kg	1728pcs	4138pcs
150W	L415*W415*H135mm	1PCS/CTN	0.0233m3	2.2kg	2.8kg	1260pcs	3223pcs
200W	L485*W485*H140mm	1PCS/CTN	0.0329m3	3.0kg	3.6kg	957pcs	2166pcs

PERFORMANCE

STANDARD VERSION

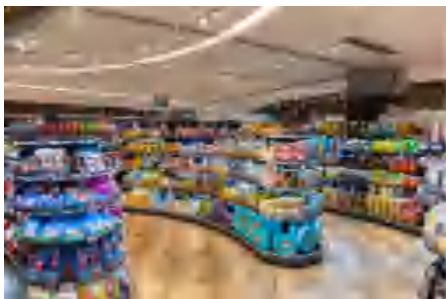
POWER	LUMENS	EFFICACY
100W	16,000LM	160LM/W(Ra70)
	14,800LM	148LM/W(Ra80)
150W	24,000LM	160LM/W(Ra70)
	22,200LM	148LM/W(Ra80)
200W	32,000LM	160LM/W(Ra70)
	29,600LM	148LM/W(Ra80)

ECO VERSION

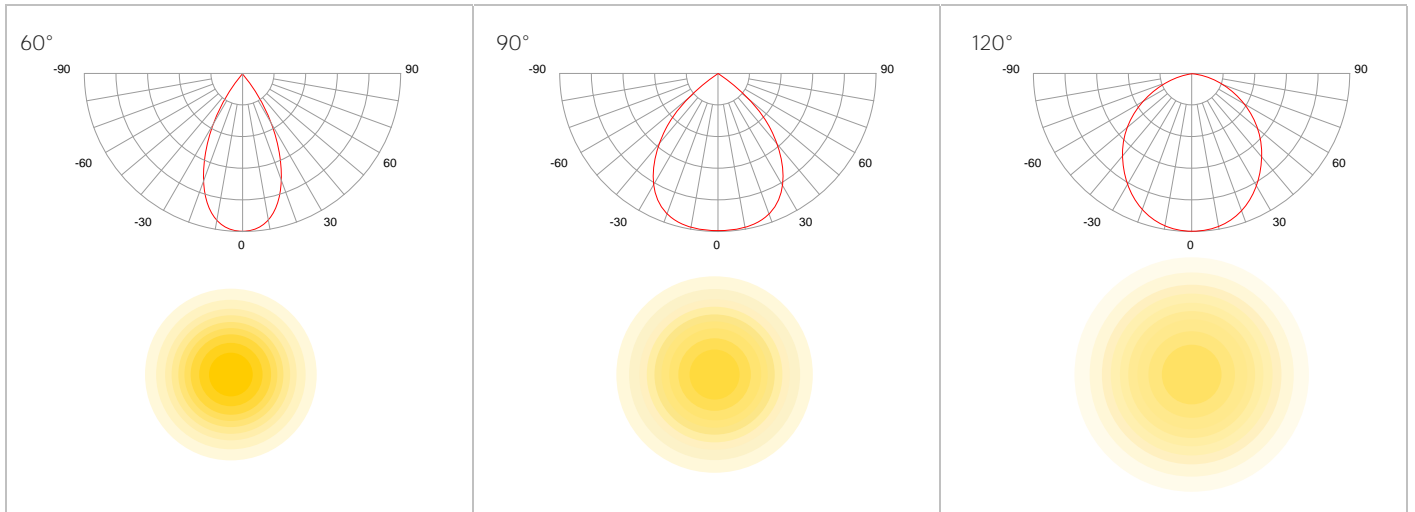
POWER	LUMENS	EFFICACY
100W	14,000LM	140LM/W(Ra70)
	13,000LM	130LM/W(Ra80)
150W	21,000LM	140LM/W(Ra70)
	19,500LM	130LM/W(Ra80)
200W	28,000LM	140LM/W(Ra70)
	26,000LM	130LM/W(Ra80)

※The Performance Data is tested base on 230VAC, 90° and 4000K for all versions
 ※Power Consumption Tolerance ±5% (Apply to all versions)
 ※Lumen Efficiency Tolerance ±5% (Apply to all versions)

APPLICATION



LIGHT DISTRIBUTIONS



PENDANT MOUNTING

Power	Size
100W	Φ 300*H118mm
150W	Φ 360*H121mm
200W	Φ 420*H126mm

