

# LHB09-Series

## Design For Padel Court

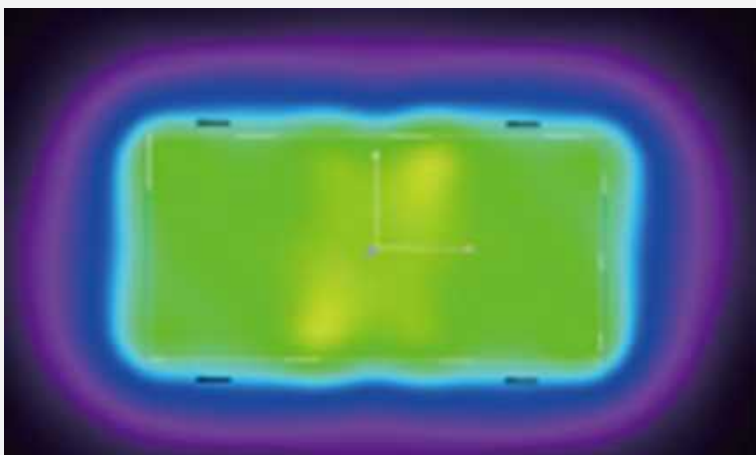
Turn Night into Day, Play the Padel Way!



## Horizontal installation, easy installation, saving installation cost



## Even lighting, uniformity > 0.8



## Expandable and connectable in width to satisfy high illumination requirements

### Up to 480W



# SPECIFICATIONS TABLE

GENERAL INFORMATION	
Driver included	Yes
CE mark	Yes
RoHS compliant	Yes
Safety features	Open circuit protection Short circuit protection Overvoltage protection
Testing standard	LM-79-19 (all measurements in ISO17025 accredited laboratory)
HOUSING AND FINISH	
Housing	Aluminium
Optic	Polycarbonate
Protector	Polycarbonate (with integrated lenses)
Housing finish	Electrostatic polyester powder coating
Standard colour(s)	RAL 9017 black
OPERATING CONDITIONS	
Operating Temperature Range (Ta)	-30°C to + 45°C
Operating Humidity	10-90%RH
Mounting Option	Pendant mounting / Bracket installation / Pole mounting
Warranty	5 years
PERFORMANCE	
Power	120W/240W/480W
Efficacy	160lm/W
Power Efficiency	≥90%
Start Time	≤0.2S
Warm-up time to 60%	0.5S

ELECTRICAL INFORMATION	
Electrical Class	Class I EU
Nominal Voltage	120-277V   50/60Hz
Power factor (at full load)	0.9
Surge Protection Options (KV)	6KV-Line-Line 6KV-Line-Earth
Electromagnetic Compatibility (EMC)	EN 55015:2019/A11:2020, EN 61000 3-2:2019, EN 61000-3-3:2013, EN 61547:2009, EN 62493:2015
Total Harmonic Distortion(THD)	IEC 61000-3-2 Class C <20%
Driver Type	Constant current(CC)
Withstand Voltage	1.5KV 60S 10mA
OPTICAL INFORMATION	
LED Type	SMD5050
Beam Angle	60°x110°
Recommended installation height	6m
Color Tolerance	Ra70 ≤7 Ra80 ≤5
LED colour Temperature	3000K / 4000K / 5000K / 5700K / 6500K
Colour Rendering Index (CRI)	CRI>70 standard CRI>80 optional
Upward Light Output Ratio (ULOR)	0%
LIFETIME OF THE LEDS @ TA 25°C	
All configurations	
L70B50	> 100,000h
L80B20	> 50,000h
L90B10	> 30,000h
Switching Cycles	> 100,000 times

※Lamp switch must control L line or control L and N lines.  
 ※Ra measurement tolerance is ±2.

# PACKAGING

POWER	PACKAGE SIZE	QTY/CTN	SINGLE PIECE VOLUME	NET WEIGHT	GROSS WEIGHT	20GP	40HQ
120W	L400*W240*H155mm	1PCS/CTN	0.0149m3	/	/	1747pcs	4436pcs
240W	L755*W240*H155mm	1PCS/CTN	0.0281m3	/	/	926pcs	2350pcs
480W	L755*W365*H155mm	1PCS/CTN	0.0427m3	/	/	609pcs	1545pcs

# PERFORMANCE

## PRO VERSION

POWER	LUMENS	EFFICACY
120W	20,400LM	170LM/W(Ra70)
	19,200LM	160LM/W(Ra80)
240W	40,800LM	170LM/W(Ra70)
	38,400LM	160LM/W(Ra80)
480W	81,600LM	170LM/W(Ra70)
	76,800LM	160LM/W(Ra80)

- ※The Performance Data is tested base on 230VAC, 60x90° and 4000K for all versions
- ※Power Consumption Tolerance ±5% (Apply to all versions)
- ※Lumen Efficiency Tolerance ±5% (Apply to all versions)
- ※When using a 30x70° configuration, the light efficiency decreases by 10%
- ※When using 40x110° configuration, the light efficiency decreases by 5%

# APPLICATION



# LIGHT DISTRIBUTIONS



# PENDANT MOUNTING

Power	Size
120W	L358*W201*H116mm
240W	L713*W201*H116mm
480W	L713*W323*H116mm

