



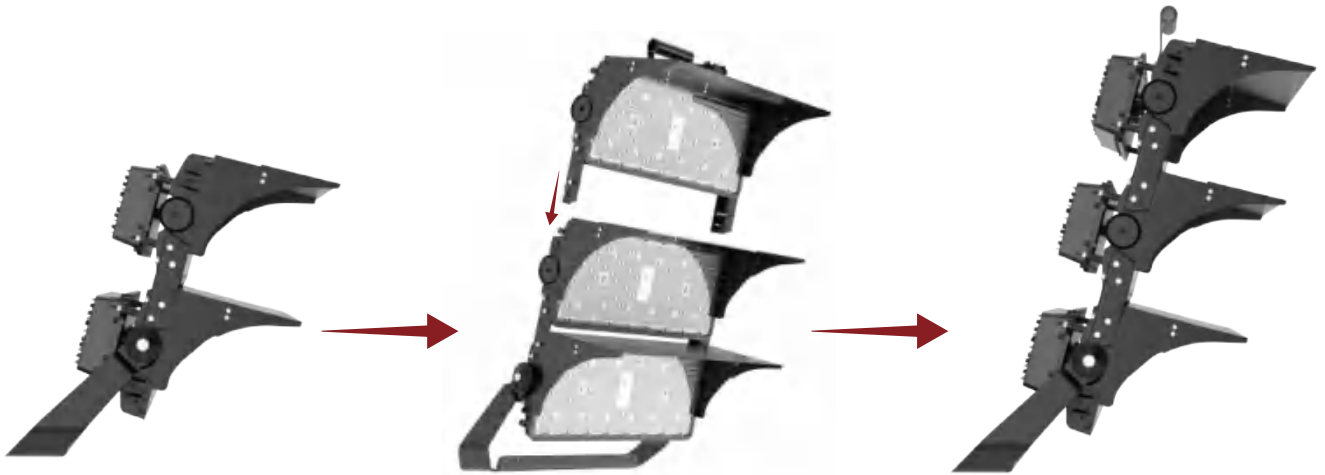
FL06-Series

Multiple Power Options with Complete Wattage

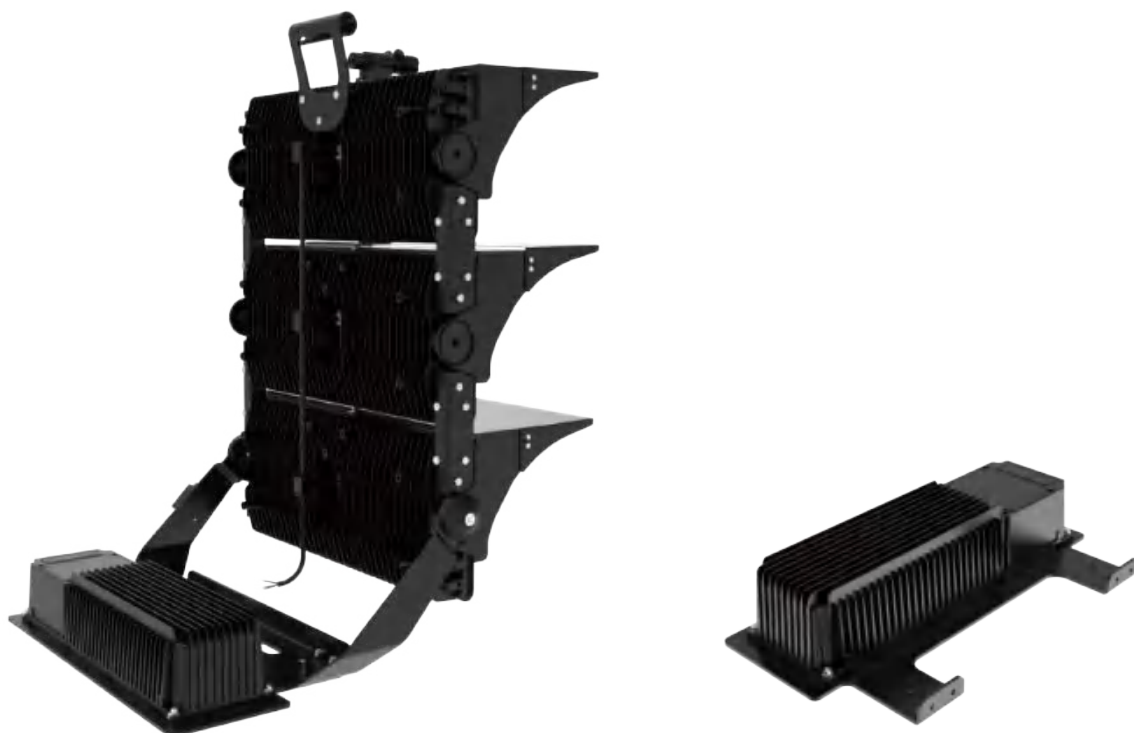
Expandable Due to Modular Design / Remote Driver Gear for Easy Maintenance



EXPANDABLE DUE TO MODULAR DESIGN

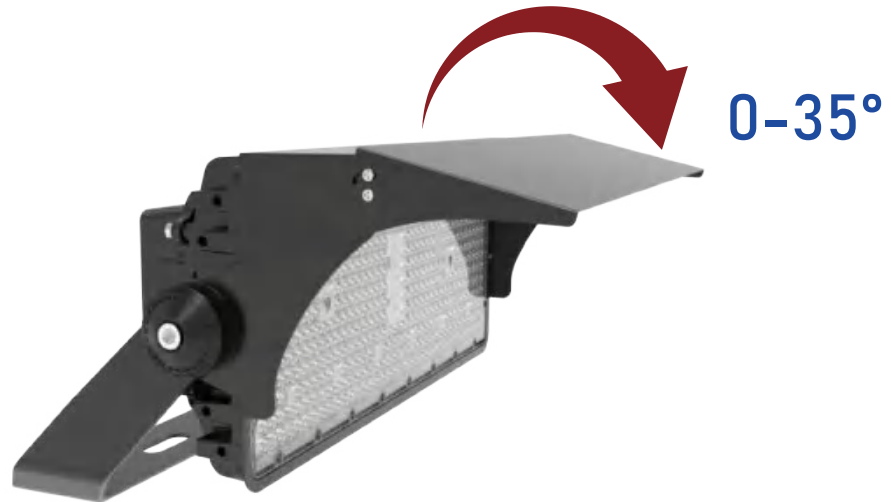


REMOTE DRIVER GEAR FOR EASY MAINTENANCE



ROTATABLE LENS HOOD

Precise light control, suitable for professional courses, effective control of light pollution.



LENS HOOD

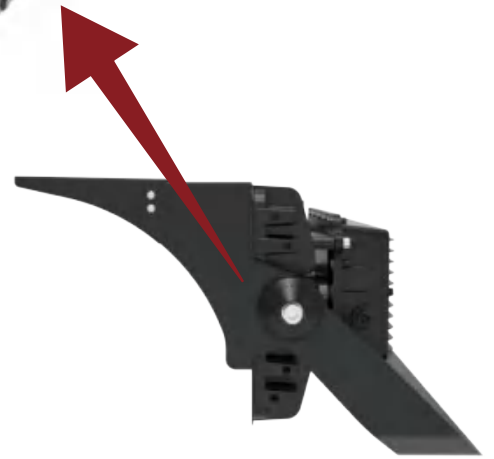
The shade cap with orange surface can block out the light, diffuse reflection, and illuminate uniformly.





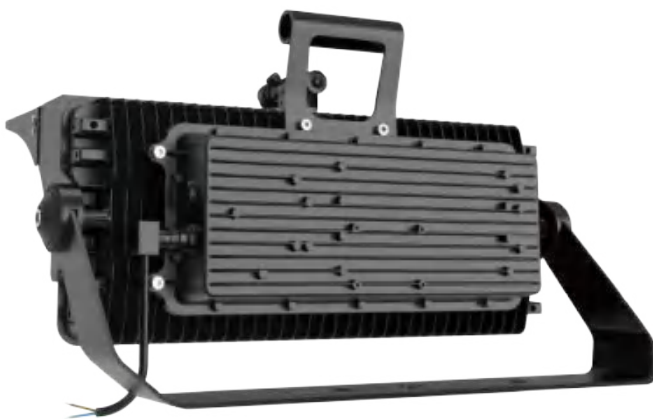
SCALE WEIGHT ROTATING DISK

By gravity, the object rotates and drives the scale disk. The direction indicated by the pointer is unchanged. The rotation angle is the corresponding degree pointed by the pointer to the scale disk.



LABOR-SAVING HANDLE

On-site installation fulcrum; The curved handle is easy to install and will not hurt the hand.



LASER AIMING DEVICES

The Laser Aiming Device gives you precision control in angling

CABLE PROTECTION

Protect the wire from bird's pecking.



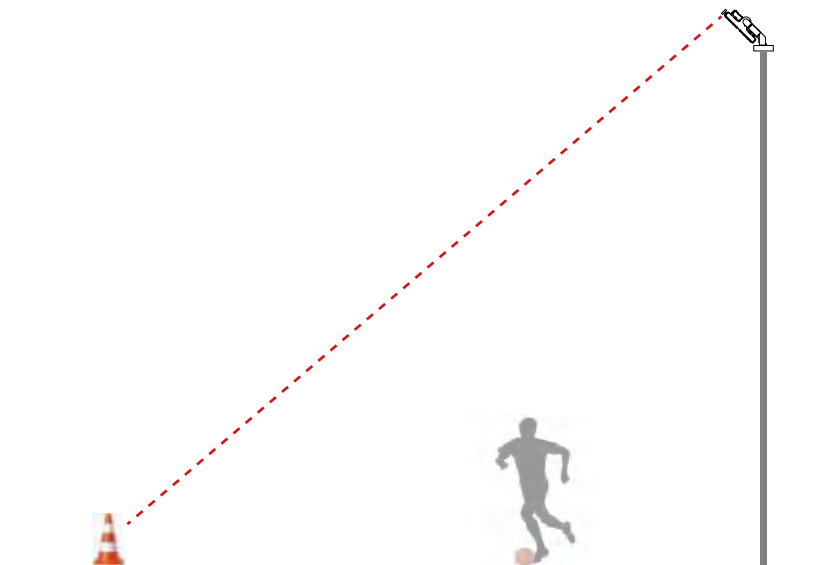
20KV

Keep your equipment safe from lightning strikes and other surges with our 20kV SPD. Long-lasting and easy to install.



AIMING DEVICE

Make installation easier and more accurate.



SPECIFICATIONS TABLE

GENERAL INFORMATION	
Driver included	Yes
CE mark	Yes
RoHS compliant	Yes
Safety features	Open circuit protection Short circuit protection Overvoltage protection
Testing standard	LM-79-19 (all measurements in ISO17025 accredited laboratory)
HOUSING AND FINISH	
Housing	Aluminium
Optic	Polycarbonate
Respirator	Yes
Housing finish	Electrostatic polyester powder coating
Standard colour(s)	RAL 9017 black
OPERATING CONDITIONS	
Operating Temperature Range (Ta)	-30°C to + 35°C
Operating Humidity	10-90%RH
Mounting Option	Bracket Mounting
Warranty	5 years
PERFORMANCE	
Power	500W/1000W/1500W
Efficacy	160lm/W,150lm/W
Power Efficiency	≥90%
Start Time	≤0.2S
Warm-up time to 60%	0.5S

ELECTRICAL INFORMATION	
Electrical Class	Class I EU
Nominal Voltage	120-277V 50/60Hz
Power factor (at fullload)	0.9
Surge Protection Options (KV)	10KV-Line-Line 20KV-Line-Earth
Electromagnetic Compatibility (EMC)	EN 55015:2019/A11:2020, EN 61000 3-2:2019, EN 61000-3-3:2013, EN 61547:2009, EN 62493:2015
Total Harmonic Distortion(THD)	IEC 61000-3-2 Class C <20%
Driver Type	Constant current(CC)
Withstand Voltage	1.5KV 60S 10mA
OPTICAL INFORMATION	
LED Type	SMD3030
Beam Angle	15°/30°/60°
Recommended installation height	15m to 45m
Color Tolerance	Ra70 ≤7 Ra80 ≤5
LED colour Temperature	3000K / 4000K / 5000K / 5700K / 6500K
Colour Rendering Index (CRI)	CRI>70 standard CRI>80 optional
Upward Light Output Ratio (ULOR)	0%
LIFETIME OF THE LEDS @ TA 25°C	
All configurations	
L70B50	> 100,000h
L80B20	> 50,000h
L90B10	> 30,000h
Switching Cycles	> 100,000 times

※ Lamp switch must control L line or control L and N lines.

※ Ra measurement tolerance is ±2.

PERFORMANCE

STANDARD VERSION

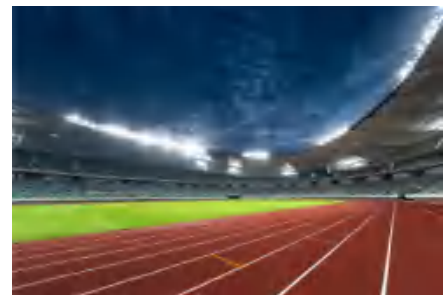
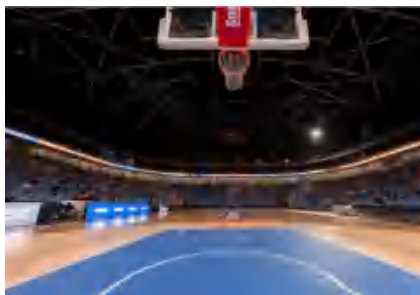
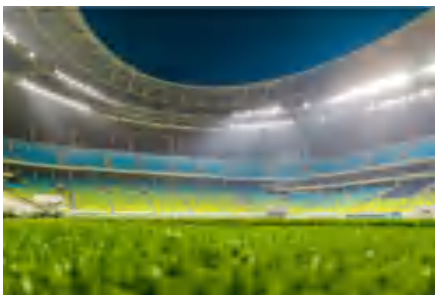
POWER	LUMENS	EFFICACY
500W	80,000LM	160LM/W(Ra70)
	75,000LM	150LM/W(Ra80)
1000W	160,000LM	160LM/W(Ra70)
	150,000LM	150LM/W(Ra80)
1500W	240,000LM	160LM/W(Ra70)
	225,000LM	150LM/W(Ra80)

※ The Performance Data is tested base on 230VAC, 30° and 4000K for all versions
 ※ Power Consumption Tolerance ±5% (Apply to all versions)
 ※ Lumen Efficiency Tolerance ±5% (Apply to all versions)

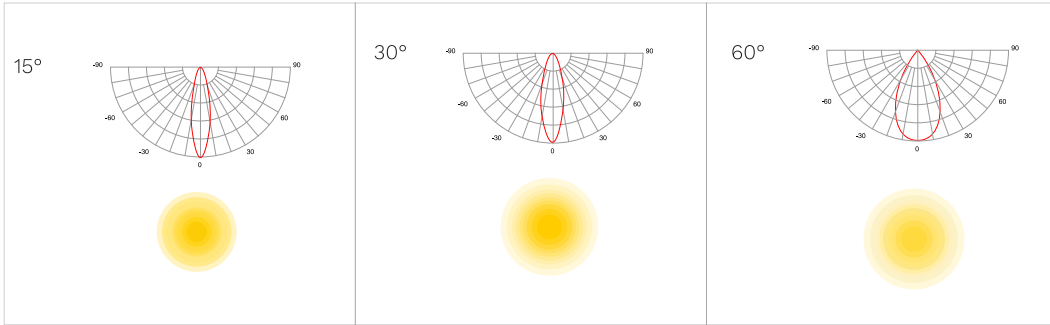
PACKAGING

POWER	PACKAGE SIZE	QTY/CTN	SINGLE PIECE VOLUME	NET WEIGHT	GROSS WEIGHT	20GP	40HQ
500W	L710xW535XH260mm	1PCS/CTN	0.0914m ³	10.5kg	12.5kg	275pcs	715pcs
1000W	L835*W720*H270mm	1PCS/CTN	0.1623m ³	20.5kg	23.5kg	150pcs	390pcs
1500W	L1085*W720*H270mm	1PCS/CTN	0.2109m ³	29kg	33kg	115pcs	305pcs

APPLICATION



LIGHT DISTRIBUTIONS



PENDANT MOUNTING

Power	Size
500W	L613*W425.8*H456mm
1000W	L613*W675.8*H456mm
1500W	L613*W925.8*H456mm

